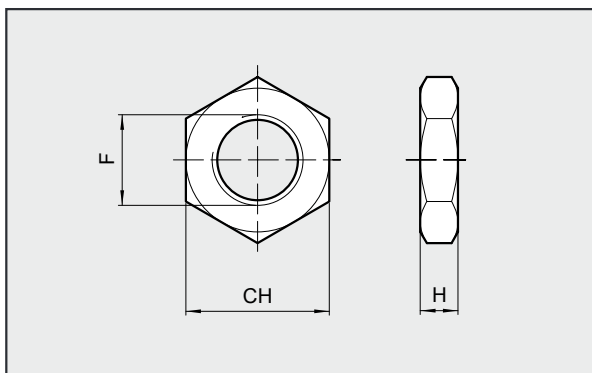




DADO INOX PER STELO

Codici Ø F H CH Peso [g]

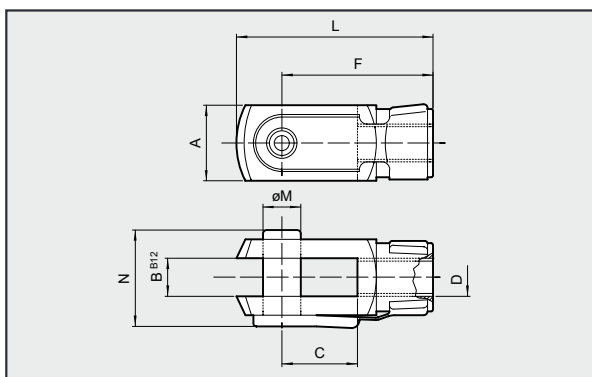


0950320200	32	M10x1.25	6	17	6
0950400200	40	M12x1.25	7	19	12
0950500200	50/63	M16x1.5	8	24	20

Nota: n. 1 pezzo per confezione

FORCELLA MOD. GK-M

Codici Ø Ø M C B A L F D N Peso [g]

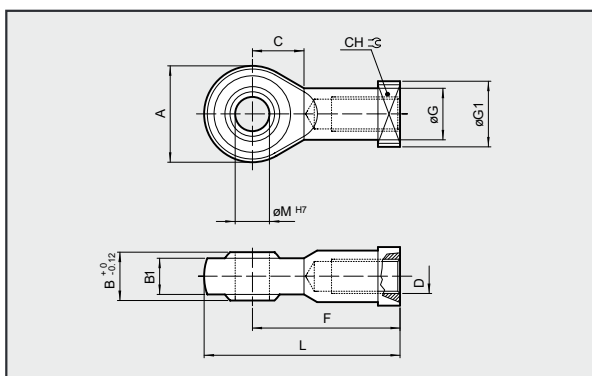


W0950322020	32	10	20	10	20	52	40	M10x1.25	26	92
W0950402020	40	12	24	12	24	62	48	M12x1.25	32	148
W0950502020	50	16	32	16	32	83	64	M16x1.5	40	340
W0950502020	63	16	32	16	32	83	64	M16x1.5	40	340

Nota: n. 1 pezzo per confezione

SNODO SFERICO - MOD. GA-M

Codici Ø Ø M C B₁ B A L F D Ø G CH Ø G1 Peso [g]

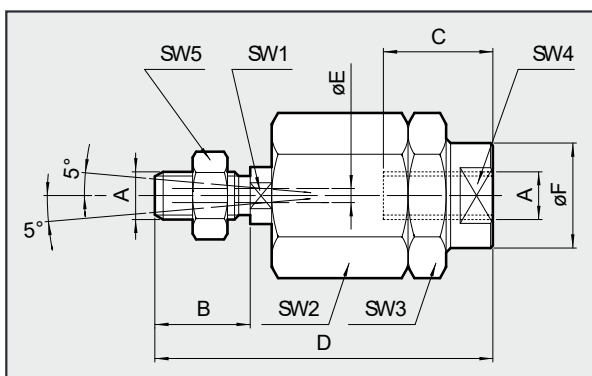


W0950322025	32	10	15	10.5	14	28	57	43	M10x1.25	15	17	19	78
W0950402025	40	12	17	12	16	32	66	50	M12x1.25	17.5	19	19	116
W0950502025	50	16	22	15	21	42	85	64	M16x1.5	22	22	22	226
W0950502025	63	16	22	15	21	42	85	64	M16x1.5	22	22	22	226

Nota: n. 1 pezzo per confezione

GIUNTO SNODATO - MOD. GA-K

Codici Ø A B C D ØF ØE SW₁ SW₂ SW₃ SW₄ SW₅ Peso [g]



W0950322030	32	M10x1.25	20	20	71	22	4	12	30	30	19	17	216
W0950402030	40	M12x1.25	24	20	75	22	4	12	30	30	19	19	220
W0950502030	50	M16x1.5	32	32	103	32	4	20	41	41	30	24	620
W0950502030	63	M16x1.5	32	32	103	32	4	20	41	41	30	24	620

Nota: n. 1 pezzo per confezione