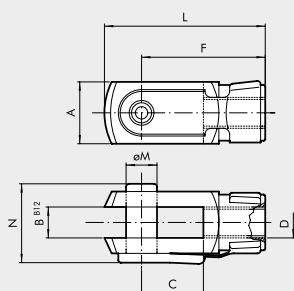


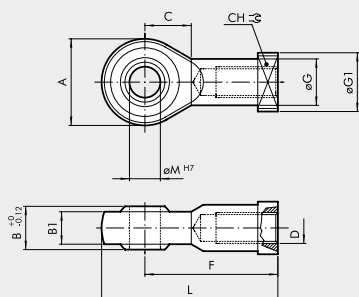
FORCELLA MOD. GK-M



Codice	Ø	ØM	C	B	A	L	F	D	N	Peso [g]
W0950080020	8	4	8	4	8	21	16	M4	11	8
W0950080020	10	4	8	4	8	21	16	M4	11	8
W0950120020	12	6	12	6	12	31	24	M6	16	20
W0950120020	16	6	12	6	12	31	24	M6	16	20
W0950200020	20	8	16	8	16	42	32	M8	22	48
W0950322020	25	10	20	10	20	52	40	M10x1.25	26	92

Nota: n. 1 pezzo per confezione

SNODO SFERICO - MOD. GA-M



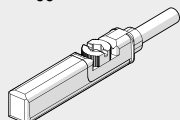
Codice	Ø	ØM	C	B	B1	A	L	F	D	ØG	ØG1	CH	Peso [g]
W0950080025	8	5	10	8	6	18	36	27	M4	9	11	9	22
W0950080025	10	5	10	8	6	18	36	27	M4	9	11	9	22
W0950120025	12	6	11	9	6.75	20	40	30	M6	10	13	11	28
W0950120025	16	6	11	9	6.75	20	40	30	M6	10	13	11	28
W0950200025	20	8	13	12	9	24	48	36	M8	12.5	16	14	50
W0950322025	25	10	15	14	10.5	28	57	43	M10x1.25	15	19	17	78

Nota: n. 1 pezzo per confezione

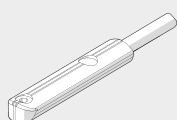
ACCESSORI PER MINICILINDRI ISO 6432: SENSORI MAGNETICI

E SENSORE A SCOMPARSA

SENSORE TIPO SQUARE
Ultima generazione,
fissaggio robusto

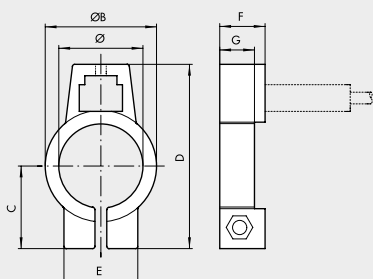


SENSORE TIPO OVALE
Tradizionale



Per codici e dati tecnici vedere capitolo A6.

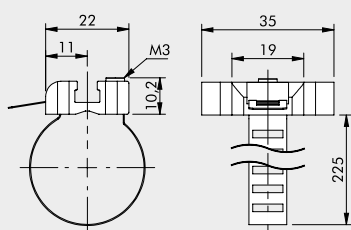
F FASCETTA PORTASENSORE MOD. DSW



Codice	Alesaggio	Modello	Ø	ØB	C	D	E	F	G
W0950000608	8	BEF-KHZ-RT-08F23	9.3	12.3	11	24.7	12.2	10	-
W0950000610	10	BEF-KHZ-RT-10F23	11.3	14.3	12	26.7	12.2	10	-
W0950000612	12	BEF-KHZ-RT-12F23	13.3	16.3	13.3	29	12.2	10	-
W0950000616	16	BEF-KHZ-RT-16F23	17.7	20.5	15.5	33.2	12.2	10	7.8
W0950000620	20	BEF-KHZ-RT-20F23	21.7	24.5	17.6	37.3	12.2	10	7.5
W0950000625	25	BEF-KHZ-RT-25F23	26.7	29.5	20.2	42.4	12.2	10	7.5

Nota: n. 1 pezzo per confezione

G FASCETTA UNIVERSALE



Codice	Alesaggio	Modello
W0950001103	8-25	Fascetta universale 8-63

Nota: n. 1 pezzo per confezione

MATERIALE

Fascetta: acciaio inossidabile
Portasensore: zama