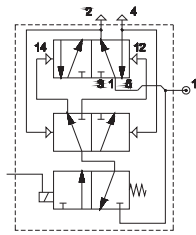
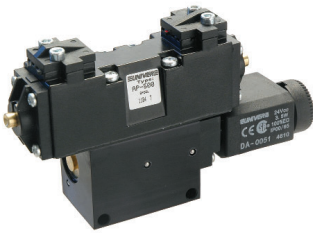


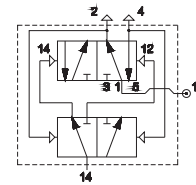
Contatori binari (flip flop)

■ **AP-500**
Con comando elettrico



Pressione max di esercizio: 10 bar
Pressione min di azionamento: 3 bar
Temperatura ambiente: -30 ÷ +80 °C
Bobina: U1 serie DA

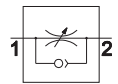
■ **AP-520**
Con comando pneumatico



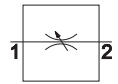
Le elettrovalvole sono fornite senza bobina, connettore e ghiera di bloccaggio

Regolatori di flusso corpo metallico

■ **AM-50**
Regolatori di flusso unidirezionali e bidirezionali
M5 - G 1/8 - G 1/4 - G 3/8 - G 1/2



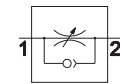
Regolazione unidirezionale



Regolazione bidirezionale

		Ø mm
AM-5060	M5	1
AM-5061	G1/8	1
AM-5062	G1/8	2,25
AM-5063	G1/8	3,5
AM-5064	G1/4	5
AM-5065	G1/4	6
AM-5066	G3/8	6
AM-5067	G1/2	9
AM-5070	M5	1
AM-5071	G1/8	1
AM-5072	G1/8	2,25
AM-5074	G1/4	5
AM-5076	G3/8	6
AM-5077	G1/2	9

■ **AM-50**
Regolatori di flusso unidirezionali G1/2 - G 3/4 - G 1

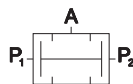


Regolazione unidirezionale

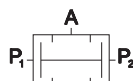
		Ø mm
AM-5090	G1/2	9
AM-5091	G3/4	9
AM-5092	G1	12

Valvole elaborazione segnali

■ **AM-51**
Valvole a due pressioni "AND"

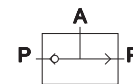


AM-5160
corpo filettato G1/8

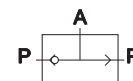


AM-5161
attacchi rapidi Ø 4x2

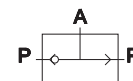
■ **AM-51**
Valvole selettive "OR"



AM-5162
corpo filettato G1/8



AM-5163
attacchi rapidi Ø 4x2



AM-5164
corpo filettato G1/4

Per tipologia e versioni, consultare catalogo ATEX

Disponibile versione ATEX su richiesta
CE Ex II 2Gc IICT5 II 2Dc T100°C

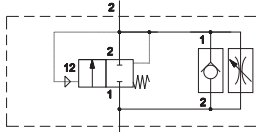
Avviatore progressivo

■ AM-52

Avviatore progressivo G1/8 ÷ G1

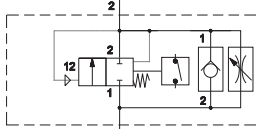


Con regolazione manuale



		Ø mm
AM-5240	G1/8	6,5
AM-5241	G1/4	6,5
AM-5242	G1/4	9,5
AM-5243	G3/8	9,5

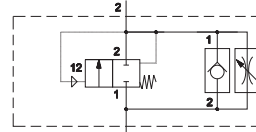
Con interruttore elettrico



		Ø mm
AM-5242E	G1/8	9,5
AM-5243E	G3/8	9,5

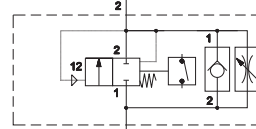


Con regolazione manuale



		Ø mm
AM-5254	G1/2	15
AM-5255	G3/4	15
AM-5256	G1	24

Con interruttore elettrico

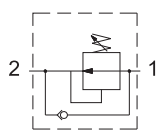


		Ø mm
AM-5259	G1/2	15
AM-5260	G3/4	15
AM-5261	G1	24

Economizzatori

■ AM-53

Economizzatore G1/8 ÷ G1

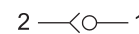


		Ø mm
AM-5350	G1/8	6,5
AM-5351	G1/4	6,5
AM-5352	G1/4	9,5
AM-5353	G3/8	9,5
AM-5354	G1/2	15
AM-5355	G3/4	15
AM-5356	G1	24

Valvole di non ritorno

■ AM-54

Valvole di non ritorno G1/2 - G3/4 - G1

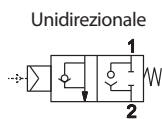


		Ø mm
AM-5400	G1/2	15
AM-5401	G3/4	15
AM-5402	G1	24

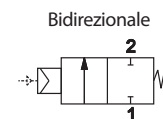
Valvole di blocco

■ AM-55

Valvole di blocco



		Ø mm
AM-5500	G1/8	6,5
AM-5501	G1/4	6,5
AM-5502	G1/4	9,5
AM-5503	G3/8	9,5
AM-5504	G1/2	15

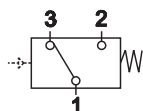


		Ø mm
AM-5510	G1/8	6,5
AM-5511	G1/4	6,5
AM-5512	G1/4	9,5
AM-5513	G3/8	9,5
AM-5514	G1/2	15

Trasduttori e pressostati

■ AM-5200

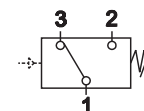
Trasduttore pneumoelettrico



AM-5200

■ AM-5220

Pressostato tarabile



AM-5220