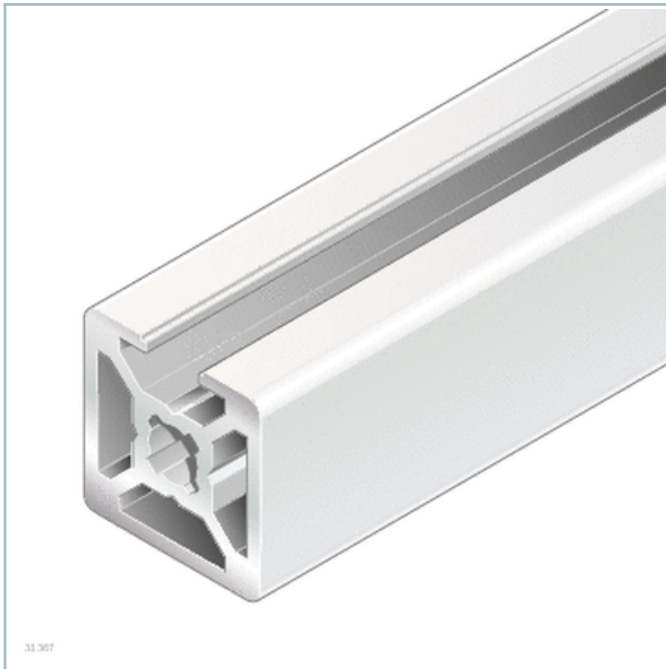


Strut profile 20x20 1N



- Strut profiles with 6 mm slot for light structures, such as supports and lab fixtures
- The 20x40 and 20x60 profiles are particularly suitable for reinforcing
- The 20x40x40 profile is suitable for constructing show cases, flow racks and enclosures

Product description

[Quick & Easy profile finishes](#)

[Introduction to strut profiles](#)

Technical data

No.	Material
3842993421	Anodized aluminum
3842536475	
3842993690	
3842548742	PP
3842548743	
3842536476	Anodized aluminum

Groove			6	
Moment of inertia	I_x	cm ⁴	0.8	0.8
	I_y	cm ⁴	0.8	0.8
Moment of resistance	W_x	cm ³	0.8	0.8
	W_y	cm ³	0.8	0.8
Torsion index	I_T	cm ⁴	0.6	0.6
	W_t	cm ³	0.67	0.67
Mass	m	kg	0.5	0.5

[Quick & Easy profile finishes](#)

Dimensions

Strut profile 20x20 1N

20x20 1N

A = 1,9 cm²

I_x = 0,8 cm⁴

I_y = 0,8 cm⁴

W_x = 0,8 cm³

W_y = 0,8 cm³

I_t = 0,6 cm⁴

W_t = 0,67 cm³

m = 0,5 kg/m




19169

Ordering codes

The following cover caps can be used:

20x20 signal gray (1 item)

20x20 black (1 item)

	L			ESD	No.
	mm				
Strut profile 20x20 1N	50 ... 3000		1		3842993421
Strut profile 20x20 1N, 20xL=3000mm	3000	20			3842536475
Strut profile 20x20 1N Q&E	50 ... 3000		1		3842993690
Cover cap 20x20, signal gray			100		3842548742
Cover cap 20x20, black			20		3842548743
Strut profile 20x20 1N	3000		1		3842536476

Quick & Easy profile finishes

Standard profile finishing $L_{\max} = 6000$ mm (note minimum length)	M6 / D5.8 / D8 / DB8
Customized profile finishes ($L_{\max} = 2300$ mm) ¹⁾	DI / DIS / MT / MTS / MI / MIS / DG

1) $DG_{\max} = 45^\circ$; $L_{\min1} / L_{\min2} = 335 / 370$ mm