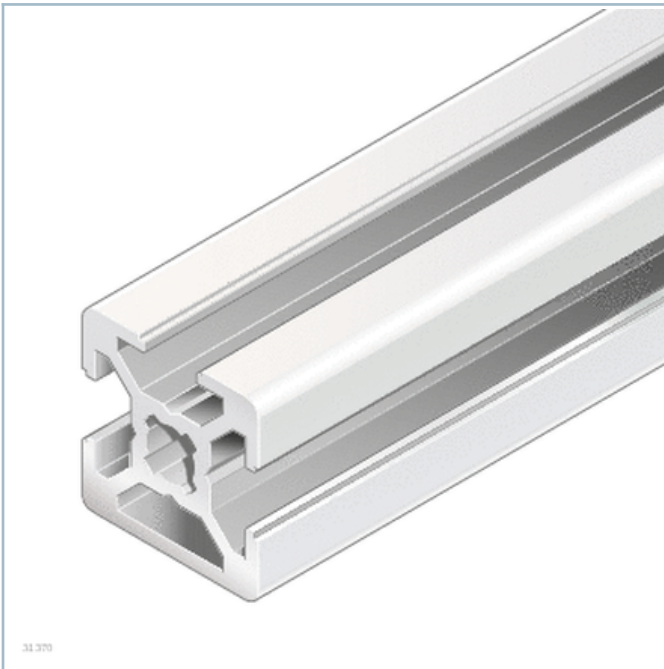


Strut profile 20x20 3N



- Strut profiles with 6 mm slot for light structures, such as supports and lab fixtures
- The 20x40 and 20x60 profiles are particularly suitable for reinforcing
- The 20x40x40 profile is suitable for constructing show cases, flow racks and enclosures

Product description

[Quick & Easy profile finishes](#)

[Introduction to strut profiles](#)

Technical data

No.	Material
3842992889	Anodized aluminum
3842517180	
3842993693	
3842548742	PP
3842548743	
3842517174	Anodized aluminum

Groove			6	
Moment of inertia	I_x	cm ⁴	0.7	0.7
	I_y	cm ⁴	0.8	0.8
Moment of resistance	W_x	cm ³	0.7	0.7
	W_y	cm ³	0.7	0.7
Torsion index	I_T	cm ⁴	0.19	0.19
	W_t	cm ³	0.34	0.34
Mass	m	kg	0.5	0.5

[Quick & Easy profile finishes](#)


Dimensions

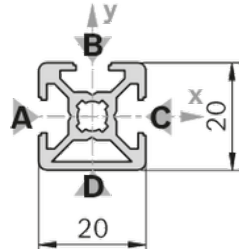
Strut profile 20x20 3N

20x20 3N

A = 1,7 cm²
 I_x = 0,7 cm⁴
 I_y = 0,8 cm⁴
 W_x = 0,7 cm³
 W_y = 0,7 cm³
 I_t = 0,19 cm⁴
 W_t = 0,34 cm³
m = 0,5 kg/m

19172







Ordering codes

The following cover caps can be used:

20x20 signal gray (1 item)

20x20 black (1 item)

	L		ESD	No.
	mm			
Strut profile 20x20 3N	50 ... 3000	1		3842992889
Strut profile 20x20 3N	3000	1		3842517180
Strut profile 20x20 3N Q&E	50 ... 3000	1		3842993693
Cover cap 20x20, signal gray		100		3842548742
Cover cap 20x20, black		20		3842548743
Strut profile 20x20 3N	3000	1		3842517174

Quick & Easy profile finishes

Standard profile finishing $L_{\max} = 6000$ mm (note minimum length)	M6 / D5.8 / D8 / DB8
Customized profile finishes ($L_{\max} = 2300$ mm) ¹⁾	DI / DIS / MT / MTS / MI / MIS / DG

1) $DG_{\max} = 45^\circ$; $L_{\min1} / L_{\min2} = 335 / 370$ mm