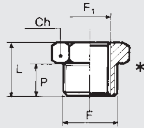


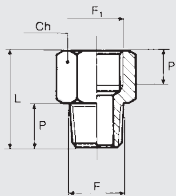
### RIDUZIONE MF CILINDRICA (A4/Z)



Codice	Rif.	F	F1	Ch	P	L
2151000	A4/Z	1/8	M5	14	6.0	10.0
2151001	A4/Z	1/4	1/8	17	8.0	13.0
2151002	A4/Z	3/8	1/8	20	9.0	14.0
2151003	A4/Z	3/8	1/4	20	9.0	14.0
2151004	A4/Z	1/2	1/4	25	10.0	15.5
2151005	A4/Z	1/2	3/8	25	10.0	15.5

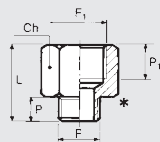
\* Possono essere utilizzate rondelle D11

### MAGGIORAZIONE MF CONICA (A5)



Codice	Rif.	F	F1	Ch	P	P1	L
2105001	A5	1/8	1/8	14	8.0	7.0	20.0
2105002	A5	1/8	1/4	17	8.0	8.0	22.5
2105003	A5	1/4	1/4	17	11.0	8.0	25.0
2105004	A5	1/4	3/8	22	11.0	10.0	28.5
2105005	A5	3/8	3/8	22	11.5	10.0	28.5
2105006	A5	3/8	1/2	24	11.5	11.0	32.0
2105007	A5	1/2	1/2	24	14.0	11.0	34.0

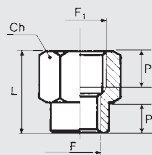
### MAGGIORAZIONE CILINDRICA (A5/Z)



Codice	Rif.	F	F1	Ch	P	P1	L
2152001	A5/Z	M5	1/8	12	4.0	7.0	17.0
2152002	A5/Z	1/8	1/8	14	6.0	7.0	18.5
2152003	A5/Z	1/8	1/4	17	6.0	8.0	21.5
2152004	A5/Z	1/4	1/4	17	8.0	8.0	22.5
2152005	A5/Z	1/4	3/8	22	8.0	10.0	26.0
2152006	A5/Z	3/8	3/8	22	9.0	10.0	26.5
2152007	A5/Z	3/8	1/2	24	9.0	11.0	29.5
2152008	A5/Z	1/2	1/2	25	10.0	11.0	29.5

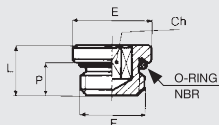
\* Possono essere utilizzate rondelle D11

### RIDUZIONE (A6)



Codice	Rif.	F	F1	Ch	P	P1	L
2106001	A6	1/8	1/4	17	8.0	8.0	21.5
2106002	A6	1/8	3/8	22	7.0	10.0	23.5
2106003	A6	1/4	3/8	22	9.0	10.0	25.5
2106004	A6	1/4	1/2	24	9.0	11.0	28.5
2106005	A6	3/8	1/2	24	11.0	11.0	29.5

### TAPPO MASCHIO CILINDRICO (A7)



Codice	Rif.	F	Ch	P	L	E	O ring
2107000	A7	M5	2.5	4.0	6.5	8	3.5x1.2
2107005	A7	M7	3	5.0	7.4	10	5x1.5
2107001	A7	1/8	3	7.0	9.5	15	2031
2107002	A7	1/4	6	8.0	11.0	18	2043
2107003	A7	3/8	8	9.0	12.5	21	2056
2107004	A7	1/2	10	11.0	14.5	26	3068

#### VERSIONE MINIATURIZZATA

2107M00	A7	M5	2.5	3.5	5.3	7.5	3.5x1.2
2107M01	A7	1/8	4	5.2	7.2	13	2031
2107M02	A7	1/4	6	6.5	8.8	16	2043
2107M03	A7	3/8	8	7.2	9.7	19.5	2056
2107M04	A7	1/2	10	9.2	12.0	24.5	3068