

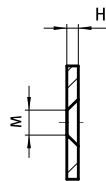
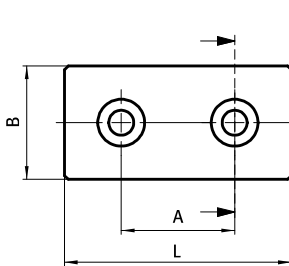


**VERBINDERPLATTE**

**CONNECTION PLATE**

**Ausführung** Stahl, ab Profil 20  
**Beschreibung** zur Verbindung von zwei Aluminiumprofilen  
**Material** Stahl  
**Befestigung** Senkschrauben  
**Liefereinheit** 10 Stück  
**Extras** weitere Oberflächen, weitere Farben auf Anfrage  
**Hinweis** \* mit 3 Senkbohrungen  
 \*\* mit 4 Senkbohrungen

**Model** Steel, profile 20 and up  
**Description** To connect two aluminum profiles  
**Material** Steel  
**Fastening** Countersunk screws  
**Pack Quantity** 10 pieces  
**Specials** Other surfaces, other colors on request  
**Tip** \* With 3 countersunk holes  
 \*\* with 4 countersunk holes



Verbinderplatte Connection Plate	A [mm]	B [mm]	H [mm]	L [mm]	für Schraube for Screw	Gewicht [g] Weight [g]	Teil-Nr. Part #
schwarz pulverbeschichtet Black powder coated	20.0	20.0	3.0	40.0	2x M5	12.0	093V2040S
	30.0	30.0	3.0	60.0	2x M6	36.0	093V3060S
	2x 30.0	30.0	4.0	90.0	3x M6	78.0	* 093V3090S
	40.0	40.0	5.0	80.0	2x M8	116.0	093V4080S
	2x 40.0	40.0	5.0	120.0	3x M8	172.0	* 093V40120S
	3x 40.0	40.0	5.0	160.0	4x M5	223.0	** 093V40160S
blau verzinkt Blue zinc plated	45.0	45.0	5.0	90.0	2x M8	149.0	093V4590S
	30.0	30.0	3.0	60.0	2x M6	36.0	093V3060V
	40.0	40.0	5.0	80.0	2x M8	116.0	093V4080V
	45.0	45.0	5.0	90.0	2x M8	149.0	093V4590V